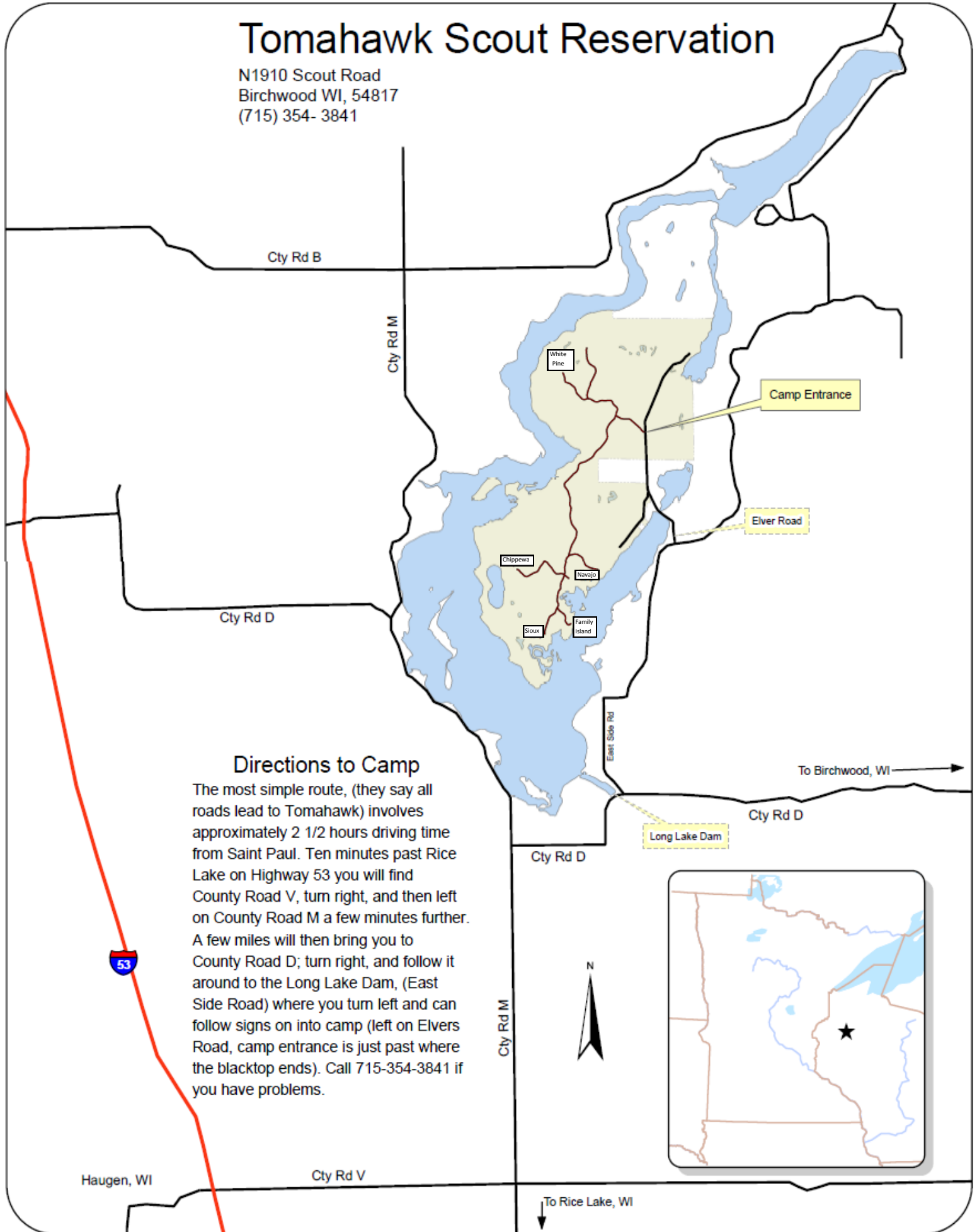


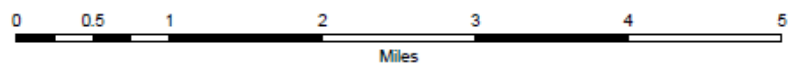
Tomahawk Scout Reservation

N1910 Scout Road
Birchwood WI, 54817
(715) 354- 3841



Directions to Camp

The most simple route, (they say all roads lead to Tomahawk) involves approximately 2 1/2 hours driving time from Saint Paul. Ten minutes past Rice Lake on Highway 53 you will find County Road V, turn right, and then left on County Road M a few minutes further. A few miles will then bring you to County Road D; turn right, and follow it around to the Long Lake Dam, (East Side Road) where you turn left and can follow signs on into camp (left on Elvers Road, camp entrance is just past where the blacktop ends). Call 715-354-3841 if you have problems.



Tomahawk Scout Reservation

N1910 Scout Road. Birchwood, WI 54817

Phone:(715)354-3841

www.camptomahawk.org

Northern Star Council
Boy Scouts of America



Roadways and Parking

